

Chapter 8: Governance

Overview of governance

Governance arrangements have been established to support the delivery of this Plan in the form of a Delivery Partnership.

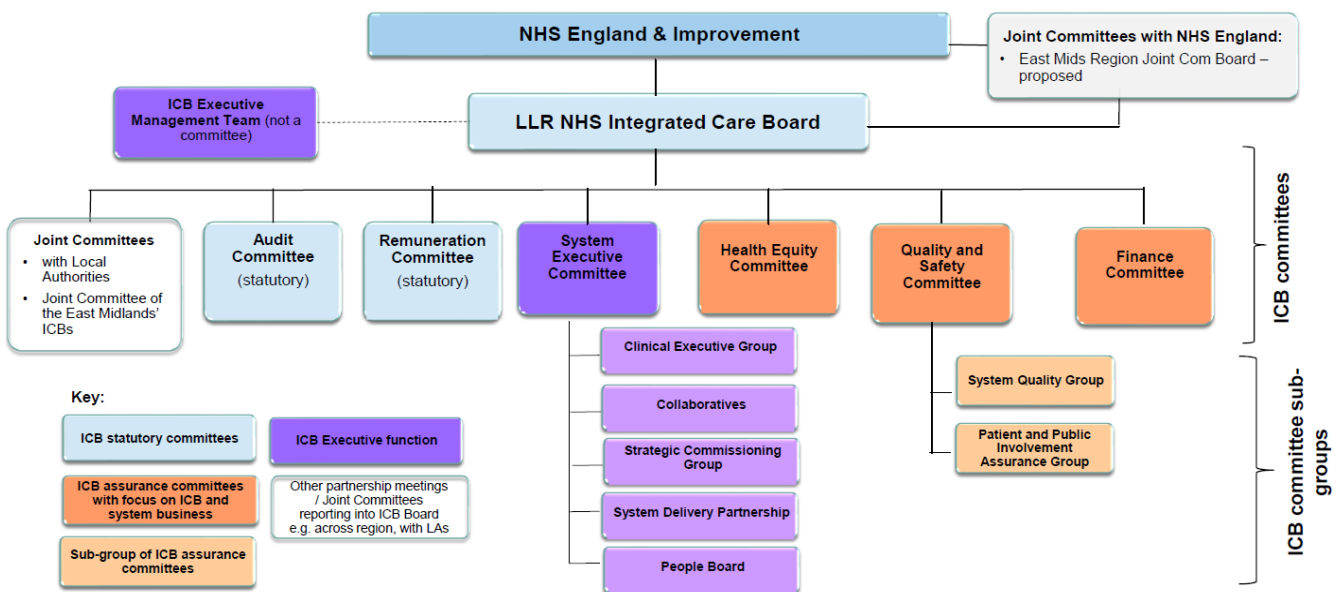
Our delivery framework

The structure included at chapter 4.4, 'our approach to transformation', outlines our delivery framework and accountability arrangements. It also includes arrangements for monitoring and escalation i.e., to the System Quality Group, Finance Committee, etc. when required.

Our approach to risk management

LLR Integrated Care Board has in place a Risk Management Strategy and Policy which sets out the ICB's approach to risk management as an organisation. Effective risk management will be essential in enabling the ICB Board to focus and prioritise resources in order to meet the ICB's strategic objectives as well as delivering the vision and key requirements of the Five-Year Plan. Partner organisations will be responsible for the risk management arrangements within their respective organisations. Risks impacting partners across the system, including the ICB, will be given due consideration through the appropriate governance arrangements which may include for instance consideration of the impact of the risk(s) through an appropriate ICB committee(s), through the appropriate collaborative(s), or through a partner organisation's own internal governance arrangements.

The system governance structure is outlined in figure 20, below.



Glossary of terms used

Acronym	Explanation
A&E	Accident and Emergency
ARC	Applied Research Centre
CAMHS	Child and Adolescent Mental Health Services
CDOP	Child Death Overview Panel
CFS	Clinical Frailty Score
CHWP	Community Health and Wellbeing Plans
CPCS	Community Pharmacy Consultation Service
CPF	Clinical Prioritisation Framework
CQC	Care Quality Commission
CSP	Community Safety Partnership
CYP	Children and Young People
EIRA	Equality Impact Risk Assessment
FOIs	Freedom of Information (Requests)
GH	Glenfield Hospital
GIRFT	'Get it right first time'
HIF	Health Inequalities Framework ('Better Care For All')
HWBs	Health and Wellbeing Boards
ICB	Integrated Care Board
ICS	Integrated Care System
IS	Independent Sector
IT	Information Technology
JHWS	Joint Health and Wellbeing Strategy
JSNA	Joint Strategic Needs Assessment
LAC	Looked After Children
LBRC	Leicester Biomedical Research Centre
LCRF	Leicester Clinical Research Facility
LD&A	Learning disability and autism
LDC	Local Dental Committee
LGH	Leicester General Hospital
LLR	Leicester, Leicestershire and Rutland
LMC	Local Medical Committee
LOC	Local Optometric Committee
LPC	Local Pharmaceutical Committee
LPS	Liberty Protection Standards
LPT	NHS Leicestershire Partnership Trust
LRI	Leicester Royal Infirmary
LTCs	Long Term Conditions
MBRRACE	Mothers and Babies: Reducing Risk through Audits and Confidential Enquiries in the UK
MECC	Making Every Contact Count
METIP	Multi-year Education Training and Investment planning
MFFD	Medically Fit for Discharge
MIST	Medication Information and Safety Tips
MRC	Medical Research Council
NIHCR	National Institute for Health and Care Research
NHSE	NHS England
OP	Out-patient
PCN	Primary Care Network
PH	Public Health
PHM	Population Health Management

POD	Pharmacy, Optometry and Dental services
PPGs	Patient Participation Groups
PSIRF	Patient Safety Incident Response Framework
QIA	Quality Impact Assessment
QOF	Quality and Outcomes Framework
RTT	Referral to treatment
SPB	Strategic Partnership Board (LLR)
TB	Tuberculosis
UHL	NHS University Hospitals of Leicester
UTC	Urgent Treatment Centre
VCS	Voluntary and Community Sector
VIM	The name of a randomised controlled phase II trial of oral vinorelbine as second line therapy for patients with malignant pleural mesothelioma undertaken by The University of Leicester

